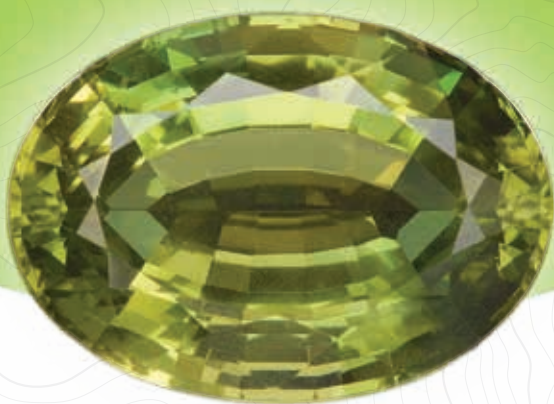


Ontario's
HIGHLANDS
COME WANDER



Wander
ONTARIO'S HIGHLANDS
and DISCOVER OUR
**HIDDEN
GEMS**





Experience RECREATIONAL **GEOLOGY** IN ONTARIO'S HIGHLANDS

Feed your sense of curiosity by exploring the diverse geology of Ontario's Highlands. Here, you can get up close and personal with one of the most unusual and rich geological settings in all of Canada. Be transported back 500 million years by exploring a cave full of fossils that will ignite your imagination of the creatures that once inhabited our earth. Feel the exhilaration of discovering buried treasure in places you would least expect. Savour the taste of authentic Canadian maple syrup and be surprised by the "true" source of its unique flavour.



Expect THE UNEXPECTED

Geology is like an intriguing detective story — if you can learn to read the rocks, you will uncover the secret history of our Earth.

In Ontario's Highlands, our geology impacts everything around us, from our land to our people. You can discover its mysteries and wonders around every corner throughout our region, taking in unique experiences that will bring you closer to nature and will nurture your soul.

Only here, can you:

- Look at Our Earth in a Different Way
- Find a New Gem With an Old Story
- Become a “Miner” for a Day
- Uncover “The Story of Our Earth”
- Wander Back to a Simpler Way of Life
- Disconnect to Reconnect

COME Wander WITH US.

Ontario's
HIGHLANDS
COME WANDER

Ontario's HIGHLANDS HALIBURTON HIGHLANDS

#MyHaliburtonHighlands

LOOK AT OUR EARTH IN A DIFFERENT WAY

Change your perspective by experiencing recreational geology from all points of view in #MyHaliburtonHighlands. Discover some of the most extraordinary crystal specimens and rare mineral species in the world by digging for treasure in Wilberforce, Tory Hill and Gooderham or head above ground to learn how bedrock, minerals, sediments, and the agents of geological change affect our landscape, and every living thing that thrives here.



COME Wander WITH US

myhaliburtonhighlands.com

12340 Highway 35, Minden / 800-461-7677

THE WORLD-FAMOUS BEAR LAKE DIGGINGS

Owned and operated by the Bancroft & District Chamber of Commerce, the Bear Lake Diggings is the Province's first publicly-protected mineral collecting location and has been one of the most popular destinations in the Bancroft collecting area for decades. Being in Haliburton County (close to other world-renowned collecting sites near Tory Hill and Wilberforce), you'll want to be sure to check out some of the other great places to dig while you're in the neighbourhood.

HIGHLANDS EAST MINERAL CLAIMS

In order to ensure lasting public access to more great mineral collecting opportunities, the municipality of Highlands East has recently taken the unprecedented step of becoming Ontario's first municipality ever to hold mineral claims.

Home to one of only a handful of mines in Canada to have been worked commercially for gemstones, Highlands East has long drawn travelling rockhounds in search of a bit of bling, but it also happens to host one of the highest concentrations of rare mineral species in all of Ontario's Highlands.

The Desmont Mine, Schickler Fluorite occurrence, Essonville Roadcut, and Titanite Hill are just a few of the rewarding public destinations you can visit, all within just a few minutes' drive of each other! Stop by the municipal office or Agnew's General Store in Wilberforce to get your rockhunting adventure started today!



Ontario's HIGHLANDS HALIBURTON HIGHLANDS

#MyHaliburtonHighlands

GREENMANTLE FARM

Even though Haliburton is home to some of the best rockhounding in Ontario's Highlands, not every great mineral location is a collecting site. Take an interpretive tour of undisturbed deposits to learn how minerals and geology affect the landscape and the environment.

GEOMORPHOLOGY HIKE

You know you've arrived in Ontario's Highlands when straight, orderly roads start to bend to the will of hilly terrain and rocky outcrops. Geomorphology is the shape of our earth. Find out more about why our landscape looks the way it does as you hike this scenic 3.5 kilometre loop.

DORSET LOOKOUT TOWER

Finish off your geomorphology adventure with a picnic lunch and a stunning overview of Ontario's Highlands' rugged landscape from this 30 metre fire tower lookout — one of the region's most popular vantages for the best fall colours in the Province!

NATURE'S PLACE

"The Land Between" is an area of extraordinary biodiversity that straddles the St. Lawrence Lowlands and the Canadian Shield. Learn about this unique ecotone and explore geology's fundamental role as the foundation of our Earth through fun activities and great natural heritage displays.

COME Wander WITH US

myhaliburtonhighlands.com

12340 Highway 35, Minden / 800-461-7677

MINDEN WILDWATER PRESERVE

The course of rivers and roads can be dictated by the land, but people and water have the power to alter the landscape in return. In Minden, these agents of geological change are hard at work turning these stunning natural rapids into an Olympic-calibre whitewater course.



GEOCACHING CAPITAL OF CANADA

You might not think of geology when you hear the word 'geocaching,' but 'geo' means earth. A rich mining heritage is an important part of our geological legacy. It's no surprise, then, that when you start exploring Highlands East, you'll find that there are some great caches hidden in old mines, and many more yet to be discovered. Ask at Agnew's General Store in Wilberforce for details.

Ontario's HIGHLANDS NORTH HASTINGS

Canada's MINERAL CAPITAL

FIND A NEW GEM WITH AN OLD STORY

Learn, grow and discover something new in North Hastings, the heart of our “rich” geological history and hub for some of the world’s most unique collections of gems, minerals and crystals. Between deep-blue sodalite, flaky mica and gemmy green apatite, lie tales of a culture and people that have shaped a way of life throughout Ontario’s Highlands.



COME Wander WITH US

bancroftdistrict.com

8 Heritage Hastings Way, Bancroft / 888-443-9999

HERITAGE TRAIN STATION

For over 30 years, the Heritage Train Station in the heart of Bancroft has been the jewel in the crown of Canada's Mineral Capital. Now completely restored and better than ever, it is home to the Bancroft Gem and Mineral Club Museum, and the Bancroft & District Chamber of Commerce. Together they have inspired thousands of visitors to go off in search of their very own buried treasure.

BANCROFT MINERAL MUSEUM

Beautiful crystals and gemstones from Ontario's Highlands grace the shelves of every major public and private mineral collection around the world. But don't worry, we've saved the best for you!

Owned and operated by the Bancroft Gem and Mineral Club, this world-class display features the finest collection of Bancroft-area minerals to be found anywhere.

Experience MORE

- Regularly-scheduled, guided collecting trips to popular locations throughout the fair season.
- Mineral collecting guidebooks, field guides, and tons of other great information about local minerals.
- World-class displays of Bancroft area minerals, gemstones, and mining memorabilia.
- Canada's largest gem and mineral show, the Rockhound Gemboree — civic Holiday long-weekend.
- General visitor information — conveniently located right in town.

Ontario's HIGHLANDS NORTH HASTINGS *Canada's* MINERAL CAPITAL

PRINCESS SODALITE MINE

The Princess Sodalite Mine, so named for the British aristocracy's keen interest in this royal-blue gem, is one of our most unique and storied recreational geology attractions. Proprietor Andy Christie is a wealth of knowledge about the area's mineral resources and offers collecting in the "Rock Farm", mineral samples for sale, handcrafted jewelry, and of course, sodalite —which he mines on-site himself.

LAKESIDE GEMS

At Lakeside Gems, you will find a large selection of semi-precious gemstones, minerals, rock-hounding tools, rock tumblers, jewelry, gifts, decor, metaphysical items, and more. Whether you're from the Bancroft area or just visiting, you will find something new and interesting every time you visit. Be sure to ask about healing workshops too!



COME Wander WITH US

bancroftdistrict.com

8 Heritage Hastings Way, Bancroft / 888-443-9999

EAGLE'S NEST LOOKOUT

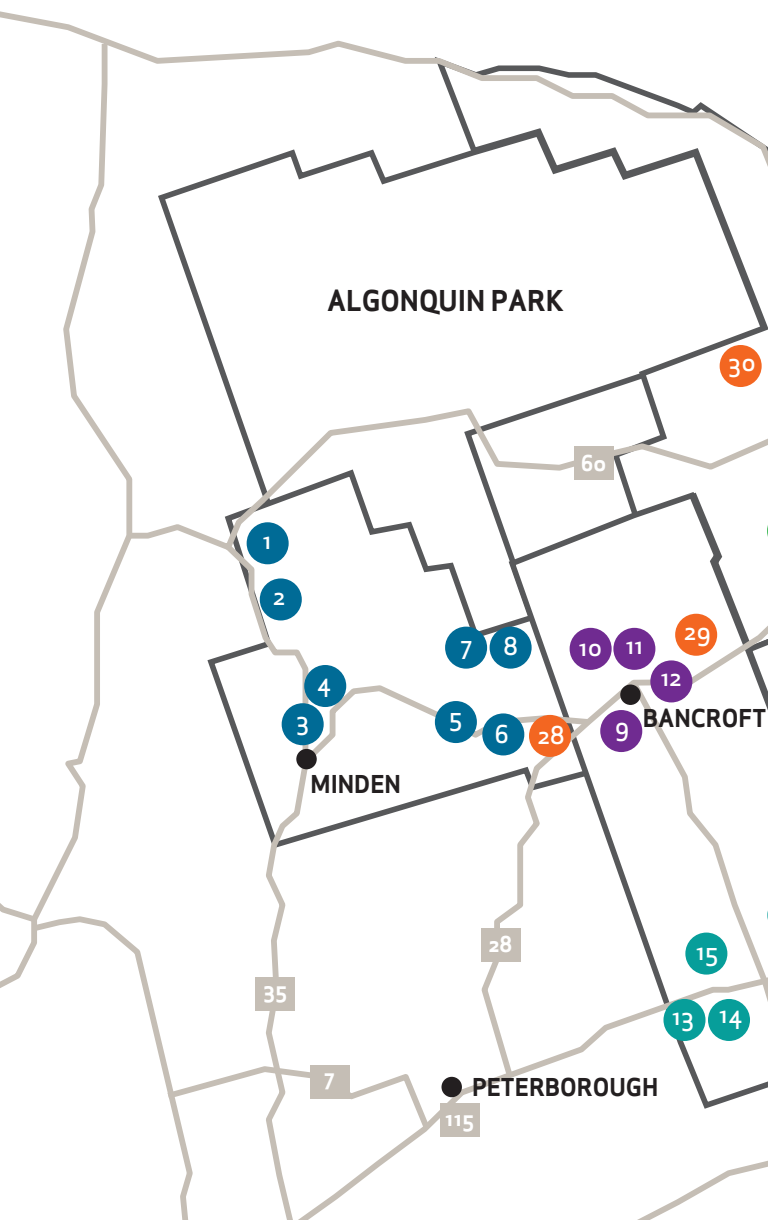
Get a bird's-eye view of how our unique geology gives rise to the iconic landscape of Ontario's Highlands from high atop one of its most striking features. Eagle's Nest is a 60-metre rock wall on the edge of the York River Valley with the town of Bancroft nestled below.



Experience MORE

Visit the annual Rockhound Gemboree in August for a chance to learn how to identify different types of gems and minerals, and even pan for gold!





HALIBURTON HIGHLANDS p.2

- 1 Dorset Fire Tower Lookout
- 2 Geomorphology Hike
- 3 Nature's Place
- 4 Minden Wild Water Preserve
- 5 Bear Lake Diggings
- 6 Greenmantle Farm
- 7 Geocaching Capital of Canada
- 8 Highlands East Municipal Office

NORTH HASTINGS p.6

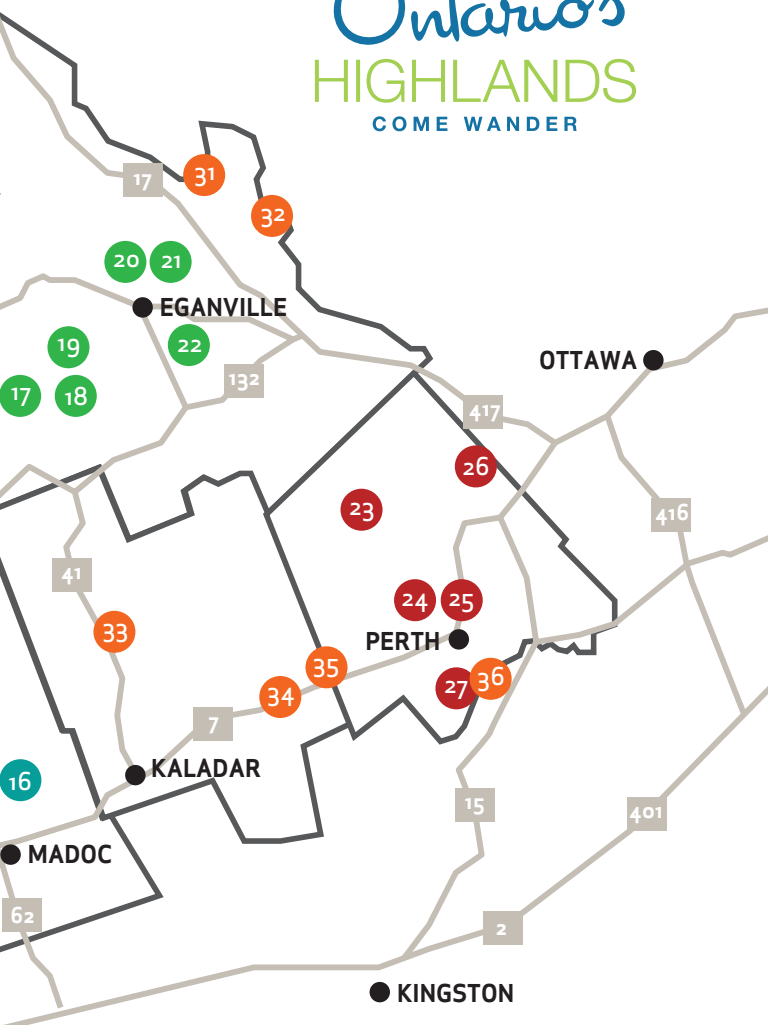
- 9 Lakeside Gems
- 10 Mineral Museum / Train Station
- 11 Eagle's Nest
- 12 Princess Sodalite Mine

SOUTH HASTINGS p.12

- 13 Marmora Tourism Office
- 14 Marmoraton Mine
- 15 Deloro Mine
- 16 Richardson Gold Mine

Ontario's HIGHLANDS

COME WANDER



OTTAWA VALLEY p.14

- 17 Rose Quartz Pit
- 18 Beryl Pit
- 19 Ontario's Highest Populated Place
- 20 Bonnechere Museum
- 21 Geology & Fossil Trail
- 22 Bonnechere Caves

LANARK COUNTY p.18

- 23 Tatlock Quarry
- 24 Matheson House Museum
- 25 Civitan Court
- 26 Metcalfe Geoheritage Park
- 27 Silver Queen Mine

ONTARIO PARKS p.20

- 28 Silent Lake Provincial Park
- 29 Egan Chutes Provincial Park
- 30 Bonnechere Provincial Park
- 31 Westmeath Provincial Park
- 32 Ottawa River Provincial Park
- 33 Bon Echo Provincial Park
- 34 Sharbot Lake Provincial Park
- 35 Silver Lake Provincial Park
- 36 Murphy's Point Provincial Park

Ontario's HIGHLANDS SOUTH HASTINGS

Centre of INDUSTRIAL HERITAGE

BECOME A “MINER” FOR A DAY

Step into the shoes of one of South Hastings’ miners during the height of the mining industry by exploring the very places where they worked, lived and thrived. As you wander through our region’s mines and spectacular views, you’ll be able to imagine a life built on hard work, the excitement of a gold rush, and even what it was like to unwind at the end of a long day. Together, the three sites below are referred to as the “Miner’s Loop” driving tour. The name harkens back to a time when weary miners would travel from town to town for a Friday night drink (or four) and to catch up on all the latest gossip from the neighbouring camps.



ONTARIO'S FIRST GOLD MINE

In 1866, a local clerk fell into a cave studded with gold while he was exploring a neighbour’s farm for copper mineralization. Although short-lived, this discovery sparked a gold rush that would rival the early days of the Klondike, 30 years later. Mounties, prospectors, homesteaders and scoundrels — hear their stories as you tour the Richardson Mine discovery location and the ruins of the original townsite of Eldorado.

COME Wander WITH US

marmoraandlake.ca/visit-2
9 Matthew St., Marmora / 613-472-1515

MARMORATON MINE

In 1948, a government airborne survey employing the brand new science of geophysics discovered a vast orebody of iron that lay beneath 120 feet of solid limestone overburden near the town of Marmora.

In 1953, stripping began to remove 70 million tons of waste rock and expose one of southern Ontario's richest iron deposits. Before it closed in 1979, the Marmoraton Mine had produced 1.3 million tons of iron ore for the Bethlehem steel mills in New York.

Today, the water-filled pit covers 75 acres and reaches depths of more than 600 feet, qualifying it as an artificial lake! The viewing area with interpretive panels offers a spectacular view.

DELORO MINE

The Deloro Mine is the site of one of the Ministry of the Environment's largest cleanup efforts in Southern Ontario. Although perhaps not the proudest moment in the history of Ontario's Highlands, it is an important lesson as we all work towards a sustainable future.

Originally worked for gold alongside the Richardson Mine, arsenic soon became its major commodity (and its unfortunate legacy). Later, the arsenic-rich ores from the historic silver mining camps of Cobalt, Ontario would also be shipped here because of special processing procedures we pioneered. Today, innovative new techniques are being employed to contain hazardous waste and return our environment to its natural state.

Ontario's HIGHLANDS OTTAWA VALLEY *Whitewater* CAPITAL OF CANADA

UNCOVER “THE STORY OF OUR EARTH”

Choose your own adventure in the Ottawa Valley, where the billion-year-old “Story of Our Earth” comes to life. As you marvel at stunning rock formations, drive through scenic vistas, hike along untouched nature trails, wander through caves and experience the strong rapids and beautiful shorelines of the Whitewater Capital of Canada, you connect with the land in a personal way, experiencing first-hand what it may have been like long ago, when erupting volcanoes, gigantic mountain ranges, advancing glaciers and ancient oceans were the norm in this breathtaking region.



COME Wander WITH US

ottawavalley.travel

9 International Drive, Pembroke / 1-800-757-6580

BONNECHERE MUSEUM

The Ordovician Period (450–500 million years ago) left an indelible mark, not only on the bedrock of the Ottawa Valley, but also on the town of Eganville. At the time, warm tropical seas teemed with life and deep ocean sediments were being laid down over parts of what is now Ontario's Highlands. These sediments were eventually cemented and uplifted to become the fossil-rich limestones that can be seen in much of the town's historic architecture, and that form the basis for its status as the Ordovician Fossil Capital of Canada. Stop in to the Bonnechere Museum for more information about great Fossil Capital activities like guided fossil hunts, interpretive walking tours, and displays of local fossils and minerals.

EGANVILLE GEOLOGY & FOSSIL TRAIL

Interpretive displays, beautifully maintained trails, scenic river views, reclaimed wildlife habitat, historic sites, and five acres of prime fossil hunting grounds — all right in town! Just a few minutes' walk from the Bonnechere Museum, the brand new Geology and Fossil Trail is the jewel in the Ordovician Fossil Capital's crown.

BONNECHERE CAVES

The Bonnechere Caves are a true marvel of the geological diversity of Ontario's Highlands. In 1853, a government surveyor made the first note on the caves' existence — two words: subterranean channels. One hundred years later, a WWII flying ace tied a rope around his waist and rediscovered Ontario's most extensive underground caverns. Visit the caves today and relive his harrowing adventure (no ropes required). Regular tours run throughout the day from the May long weekend to Thanksgiving.

Ontario's HIGHLANDS OTTAWA VALLEY *Whitewater* CAPITAL OF CANADA

ONTARIO'S HIGHEST POPULATED PLACE

The Gatineau Hills and the Eardly escarpment in Quebec, together with the Mount St. Patrick scarp in Ontario, define the edges of the Ottawa-Bonnechere Graben, an ancient continental rift that almost tore the country apart — literally!

Peer into the depths of 'The Valley' from high atop Ontario's highest populated peak. A rewarding cycling destination from the town of Eganville, or a worthwhile place to stretch your legs after a long drive, the abandoned radar base at Foymount and the lookout below provide captivating views of the Ottawa Valley.



COME Wander WITH US

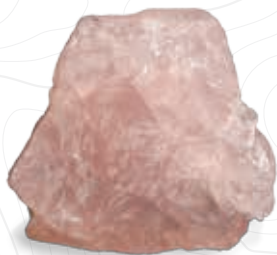
ottawavalley.travel

9 International Drive, Pembroke / 1-800-757-6580

AQUAROSE MINERALS

The Beryl Pit & Rose Quartz Pit

Whether you're looking for fine examples of rare minerals, pretty rocks for your garden, gem-quality amazonite, rose quartz and aquamarine, or just something different to do with the family this summer, you'll find it all in Quadeville. Quadeville isn't just the former getaway of notorious gangster Al Capone, it's also your chance to find real gemstones, right here in Ontario's Highlands! The Beryl Pit is accessible between May and October as a self-guided experience; permits may be purchased at Kauffeldt's General Store. Guided visits to the Rose Quartz Pit hosted by Dave and Renee are available by appointment. Phone 613-756-1361. Be sure to ask about their handcrafted, local gemstone jewellery too!



Experience MORE

Want more great opportunities to dig for buried treasure in Ontario's Highlands with exclusive access to special field-trip destinations? Whether for

yourself, or the kids, joining a Central Canadian Federation of Mineralogical Societies Club is a great way to experience more. Find a member club in your area at ccfms.ca!

Ontario's HIGHLANDS LANARK COUNTY

Maple Syrup CAPITAL OF ONTARIO

WANDER BACK TO A SIMPLER WAY OF LIFE

In Lanark County, geology is a way of life. Back in the 1800s, it spawned a backyard mining industry, and today, the stories of original families and their struggles can be conveyed through its unique landmarks, buildings, museums (and even the best maple syrup in the whole Province!). Satisfy your wandering mind at the jaw-dropping Silver Queen Mine (carved entirely out of solid rock using only hand, horse and steam power) or one of our other historical spots.



COME Wander WITH US

lanarkcountytourism.com

11 Gore Street East, Perth / 855-326-1947

SILVER QUEEN MINE

The Silver Queen Mine is the focal point for geoheritage programming, festivals, and interpretive activities organized by the Friends of Murphy's Point Provincial Park. It's also a unique opportunity to go for an underground tour of a turn-of-the-century mica mine.

MATHESON HOUSE MUSEUM

Meet Dr. Wilson (1798–1881), Ontario's Highlands' first recreational geologist. Help us celebrate the amateur contribution to science as you marvel at his discoveries and the buried treasures of Lanark County in this brand new geology display.

OUTDOOR GEOHERITAGE DISPLAYS

The Metcalfe Geoheritage Park is the first such municipal park in Ontario. Learn about the rocky environment that makes up Ontario's Highlands here, or at Civitan Court in Perth.

TATLOCK QUARRY

For a look at how mining is still an important industry in Lanark today, take in the awe-inspiring view of this operating marble quarry. Be sure to stop and check out the quaint villages along the way!

THE ROCK CYCLE

Bicycling is another important part of life in Lanark County and it's a great way to take in many of these important geoheritage sites and more. Starting at Matheson House, you can pick up a self-guided brochure for a 42 kilometre loop that will take you for a tour of Civitan Court, the perthite discovery location, and into Murphy's Point Provincial Park for a tour of the Silver Queen Mine.

Ontario's HIGHLANDS ONTARIO PARKS

DISCONNECT TO RECONNECT

Get lost in the peaceful wilderness and breathtaking geology of one of Ontario's Highlands' 30 parks, including nine Provincial Parks. Far away from crowds and as close to nature as you can get, you'll feel like you're the first person to ever set foot onto one of our pristine geology trails, or have access to spectacular natural formations like Mazinaw Rock. Here, you'll truly have an opportunity to travel the unknown.



COME Wander WITH US

ontarioparks.com

Central Reservations Line / 888-ONT-PARK (888-668-7275)

Explore our region's one-of-a-kind natural wonders at the following parks:

BON ECHO

The central feature of Bon Echo Park is the towering cliffs that rise out of Mazinaw Lake. You may have seen them in paintings by the Group of Seven, but nothing compares to the real thing!

EGAN CHUTE

There are numerous old mines and classic mineral locations along the scenic York River, just minutes from the town of Bancroft. Water access and trails provide excellent opportunities to explore our unique geology.

MURPHY'S POINT

From the Heritage Mica Days celebrations with costumed interpreters and fun family activities, to underground tours of the Silver Queen Mine, Murphy's Point Provincial Park takes Geoheritage to a deeper level. Call to book your campsite today!

BONNECHERE

The Ottawa-Bonnechere Graben is one of the most significant physiographic features of our region. It defines the Ottawa Valley and has influenced settlement and trade for thousands of years. Explore the storied waters of the Ottawa Valley through geological, archaeological, and heritage programming.

WESTMEATH

The Ottawa River near Westmeath is home to many of the outfitters and experience providers that make the Valley Canada's Whitewater Capital. Whether you're shooting the rapids or touring the parks, be sure to scan the limestone banks that give us another claim to fame: the Ordovician Fossil Capital of Canada.

Geology is like a detective story — if you can learn to read the rocks, you will uncover the secret history of our Earth.

DISCOVER MORE *at*



ONTARIOSHIGHLANDS.CA/GEOLOGY



#OHROCKS

Ontario's
HIGHLANDS
COME WANDER

ONTARIO
Yours to discover